

RESOURCE DIRECTORY

Provided by the Aging and
Disability Resource Center and
Hawai'i County Office of Aging

2023
2nd Edition

What is the Aging and Disability Resource Center (ADRC)?

The ADRC is an access point for older individuals, people with disabilities and caregivers.

The ADRC provides information, awareness and referrals island-wide. Aging and Disability Specialists are prepared to help individuals find information on supports and services provided throughout the island. They are also available to meet with families to provide Option Counseling to help people plan for long-term support needs. Option counseling may be conducted over the phone or in person. To make sure we can best serve you, it is helpful if you call to make an appointment.

This directory was developed to assist Hawai'i Island's seniors, individuals with disabilities, caregivers, and families in finding meaningful resources. This is a list of resources for most asked about items; this is not a complete list of all island resources. Please contact the Aging and Disability Resource Center (ADRC) with questions or if you need assistance with connecting to resources.

The following is provided as public information by the Hawai'i County Office of Aging and The Aging and Disability Resource Center. This information is not a complete or comprehensive list of all resources who are qualified or licensed in the County of Hawai'i. This list of resources does not constitute an endorsement, recommendation or determination of fitness to provide professional services to the public or any person or entities by the County of Hawai'i. It is your responsibility to verify and investigate the service providers. The County of Hawai'i assumes no liability for any actions, non-action, or business conducted with these resources.

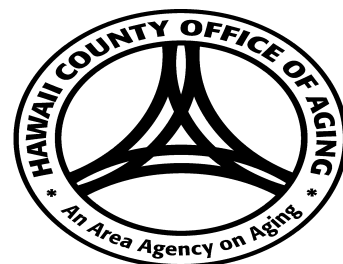
This project funded in part by the County of Hawai'i, the State Executive Office on Aging, and through the Title III funding of the Older Americans Act.

ADRC – Hilo (808) 961-8626

ADRC – Kona (808) 323-4392

HCOA – Hilo (808) 961-8600

HCOA – Kona (808) 323-4390



Directory Contents

1. Hospitals
2. Area Agency on Aging
3. Emergency Numbers
4. Adult Day Centers
5. Alzheimer's Association
6. Blind and Deaf Services
7. Caregiver Resources
8. Case Management Agencies
9. Disability Resources
10. Elder Abuse
11. Emergency Shelters/Homeless Supports
12. Employment and Volunteer Programs
13. Fall Detection/Emergency Response Devices
14. Financial Help
15. Food Resources
16. Health Insurance Resources
17. Home Care Agencies
18. Housing Resources
19. Hospice and Palliative Care
20. Legal Assistance
21. Medical Equipment
22. Mental Health Services
23. Nursing Homes and Acute Care
24. Senior Socialization
25. Transportation
26. Veteran Services
27. Additional Resources

1. Hospitals

Hilo Medical Center

1190 Waianuenue Ave

Hilo, HI 96720

www.hilomedicalcenter.org

808-932-3000

Kona Community Hospital

79-1019 Haukapila St

Kealahou, HI 96750

www.kch.hhsc.org

808-322-9311

Kau Hospital

1 Kamani St.

Pahala, HI 96777

www.kauhospital.org

808-932-4200

Queens North Hawai'i Community Hospital

67-1125 Hawai'i Belt Road

Waimea, HI 96743

www.queens.org/north-hawaii

808-885-4444

2. Area Agency on Aging and Hawai'i County Office of Aging

Hawai'i County office of Aging

1055 Kino'ole St. Suite 101

Hilo, HI 96720

www.hcoahawaii.org

808-961-8603 Office

808-961-8603 Fax

Hawai'i County Office of Aging

74-5044 Ane Keohokalole Hwy - Bldg. B

Kailua Kona, HI 96740

www.hcoahawaii.org

808-323-4390 Office

808-323-4398 Fax

Aging and Disability Resource Center

1055 Kino'ole St.

Hilo, HI 96720

www.hcoahawaii.org

808-961-8626 Office

808-961-8603 Fax

Aging and Disability Resource Center

740-5044 Ane Keohokalole Hwy – Bldg. B

Kailua Kona, HI 96740

www.hcoahawaii.org

808-323-4392 Office

808-323-4398 Fax

3. Emergency Numbers

Hawai'i Police Department - Hilo

349 Kapiolani St

Hilo, Hawai'i 96720

www.hawaiipolice.com

808-935-3311 Non-Emergency

911 Emergency

Hawai'i Police Department - Kona

74-611 Hale Maka'i Place.

Kailua-Kona, HI 96740

www.hawaiipolice.com

808-326-4646 Non-Emergency

911 Emergency

Hawai'i Police Department- Keaau

16-200 Pili Mua St.

Keaau, HI 96749

www.hawaiipolice.com

808-966-5835 Non-Emergency

911 Emergency

Hawai'i Police Department- Honoka'a

45-3400 Mamane St.

Honoka'a, HI 96727

www.hawaiipolice.com

808-775-7533 Non-Emergency

911 Emergency

3. Emergency Numbers

Waimea Police Station

67-5185 Kamamalu St
Kamuela, HI 96743
www.hawaiipolice.com

808-887-3080 Non-Emergency
911 Emergency

Pahoa Police Station

15-2615 Keaau-Pahoa Rd.
Pahoa, HI 96749
www.hawaiipolice.com

808-965-2716 Non-Emergency
911 Emergency

Laupahoehoe Police Station

36-2285 Old Mamalahoa Hwy
Laupahoehoe, HI 96764
www.hawaiipolice.com

808-962-2146 Non-Emergency
911 Emergency

Kapa'au Police Station

54-3900 Akoni Pule Hwy
Kapa'au, HI 96755
www.hawaiipolice.com

808-889-6540 Non-Emergency
911 Emergency

3. Emergency Numbers

Hawai'i County Fire Department - DISPATCH

466 Kino'ole St

Hilo, HI 96720

www.hawaiicounty.gov/deparments/fire

808-961-8336 DISPATCH

911 Emergency

Kailua Kona Fire Station

74-5537 Palani Rd

Kailua Kona, HI 96740

www.hawaiicounty.gov/department/fire

808-327-3545 Non-Emergency

911 Emergency

Keauhou Fire Station

78-7159 Puuloa Rd

Kailua Kona, HI 96760

www.hawaiicounty.gov/department/fire

808-322-5627 Non-Emergency

911 Emergency

Waimea Fire Station

67-5175 Kamamalu St.

Kamuela, HI 96743

www.hawaiicounty.gov/department/fire

808-887-3021 Non-Emergency

911 Emergency

3. Emergency Numbers

Waikoloa Fire Station

68-1771 Pua Melia St

Waikoloa Village, HI 96738

www.hawaiicounty.gov/department/fire

808-883-6101 Non-Emergency

911 Emergency

Captain Cook Fire Station

82-6120 Mamalahoa Hwy

Ocean View, HI 96704

www.hawaiicounty.gov/department/fire

808-323-3636 Non-Emergency

911 Emergency

Pahao Fire Station

15-2605 Keaau-Pahoa Rd

Pahao, HI 96778

www.hawaiicounty.gov/department/fire

808-965-2708 Non-Emergency

911 Emergency

Keaau Fire Station

16-579 Old Volcano Rd

Keaau, HI 96749

www.hawaiicounty.gov/department/fire

808-966-5809 Non-Emergency

911 Emergency

3. Emergency Numbers

South Kohala Fire Station

68-4550 Queen Kaahumanu Hwy

Kamuela, HI 96743

www.hawaiicounty.gov/department/fire

808-885-5799 Non-Emergency

911 Emergency

Makalei Fire Station

72-4077 Mamalahoa Hwy

Kailua Kona, HI 96740

www.hawaiicounty.gov/department/fire

808-932-2900 Non-Emergency

911 Emergency

4. Adult Day Care Centers

Hawai'i Island Adult Care

561 Kupuna Place

Hilo, HI 96720

www.hawaiiislandadultcare.org

808-961-3747 Phone

808-961-3740 Fax

5. Alzheimer's and Dementia

Alzheimer's Association Aloha Chapter

1670 Makaloa St. Suite 204-316

Honolulu, HI. 96814

www.alz.org/hawaii

808-591-2771 State wide

**1-800-272-3900 Nationwide 24/7
Helpline**

Alzheimer's Association Aloha Chapter

Big Island – Nicolas Los Banos

Hawai'i Island Regional Coordinator

808-518-6649 Hawai'i Island

nklosbanos@alz.org

6. Blind and Deaf Services

Ho'opono Services for the Blind

75 Aupuni Street, Suite 110 Hilo, HI 96720

75-5722 Konkani Hwy, Kona, HI 96740

<https://humanservices.hawaii.gov/vr/hoopono>

808-586-5269 TDD/V/TTY

808-323-0025 V/TTY

Captel Phone for Hearing Impaired

www.Hawaiicaptel.com

Email: Captel@captel.com

888-269-7477

Hawai'i Association for the Blind

P.O. Box 60640

Ewa Beach HI, 96706

www.Acb.org/Hawaii

Email: Hab50@hotmail.com

808-521-7648

7. Caregiver Resources

Hawai'i Community Caregiver Network

Email:

Hccn@hawaiicaregivers.org

<https://hawaiicaregiver.org>

Alu Like, Inc. Kumu Kahi Program

32 Kino'ole St. #112

Hilo, HI 96720

www.alulike.org

808-895-2158

Aging and Disability Resource Center

1055 Kino'ole St. Hilo, HI

74-5044 Ane Keohokalole Hwy Bldg. B Kona, HI

www.hcoahawaii.org

808-961-8626 Hilo

808-323-4392 Kona

8. Case Management Agencies

Blue Water Resources, Inc.

688 Kino'ole St. Suite 101

Hilo, HI 96720

www.808bwr.com

808-443-5112 Office

808-935-3595 Fax

Case Management Professionals

94-235 Hanawai Circle #1B

Waipahu, HI 96797

www.casemanagementpro.com

808-689-1937 Office

877-689-1936 Fax

Services for Seniors

32 Kino'ole St. Suite 107 and 109

Hilo, HI 96720

www.sfshawaii.org

808-935-1144 Office

808-935-1143 Fax

State Department of Health- Public Health Nursing

75 Aupuni St. Hilo, HI

79-1015 Haukapila Street, Kealahou, HI

<http://health.hawaii.gov/phnb>

808-974-6025 Phone Hilo

808-322-1500 Phone Kona

9. Disability Resources

Aloha Independent Living Hawai'i

1055 Kino'ole St. Suite 202

Hilo, HI 96720

www.AlohaLHawaii.org

Email: info@AlohaLHawaii.org

808-339-7297 Office

1-800-385-2454 Toll Free

Arc of Hilo

1099 Waianuenue Ave

Hilo, HI 96720

www.hiloarc.org

808-935-8535 Office

808-934-7714 Fax

Arc of Kona

81-990 Kaleki'i St

Kealahou, HI

www.arcofkona.org

808-323-2626 Office

808-323-9444 Fax

Department of Health Developmental Disabilities Division

78 Aupuni St.– Hilo, HI

67-5189 Kamamalu St. - Kamuela, HI

75-184 Hulualai Rd. # 201– Kailua-Kona, HI

808-974-4280 Hilo

808-887-6064 Kamuela

808-327-6212 Kona

9. Disability Resources – Statewide agencies

Hawaii State Council on Developmental Disabilities

<https://hiddcouncil.org>

808-274-3484 Office

Center on Disability Studies

<https://cds.coe.hawaii.edu>

808-956-4457 Office

SPIN – Special Parent Information Network

<https://spinhawaii.org>

808-586-8126 Office

Disability and Communication Access Board DCAB

<https://health.hawaii.gov/dcab>

808-586-8121 Voice

808-586-8162 TTY

Leadership in Disabilities and Achievement Hawaii

<https://ldahawaii.org>

808-536-9684 Office

9. Disability Resources – Statewide agencies

Assistive Technology

<https://atrc.org>

808-532-7112 Office

Vehicle Modifications

<https://wheelersvanrentals.com>

808-7356365 Office

Soderholm Mobility

2044 Dillingham Blvd

Honolulu, HI 96819

Soderholm.bus.com

- Vehicle modifications for disabled drivers

1-808-834-1417

10. Elder Abuse

Adult Protective Services

E. Hawai'i - Hilo/Hamakua/Puna

W. Hawai'i – Kau/Kona/Kohala/Kamuela

808-832-5115 State Wide Intake Line

808-933-8820 Office – E. HI

808-327-6280 Office - W. HI

Better Business Bureau – Fraud Hotline

808-628-3950 Office

1-888-333-1593 Toll Free

1-877-HI-SCAMS

Office of the Securities Commissioner Fraud Hotline

Senior Medicare Patrol - SMP

250 South Hotel St. Suite 406

Honolulu, HI 96813

www.smphawaii.org

808-586-7281

808-296-9422 Toll Free

National Domestic Violence Hotline

1-800-799-7233 Toll Free

**1-855-812-1001 Video Calls for Deaf
Callers – M – F 9:00 am – 5:00 p.m.**

PST

Available 24/7 365 days per year

11. Emergency Shelters/Homeless Supports

HOPE Services - Outreach

115 Kapiolani St

Hilo, HI 96720

www.hopeserviceshawaii.org

808-935-3050 Office

1-800-385-2454 Toll Free

Hope Services - Shelters

Kihei Pua Shelter – Hilo, HI

West HI Emergency Shelter – Kona, HI

Hale Maluhia Men's Shelter

Keolahou Men's Shelter – Hilo, HI

808-937-1837 Pua Shelter

808-217-5560 W. HI Shelter

808-443-4717 – Hale Men

808-217-7370 Keolahou Men

Mental Health Kokua East Hawai'i

208 Wainaku Ave

Hilo, HI 96720

www.mhkhawaii.weebly.com

808-935-7167 Phone

808-933-1212 Fax

Mental Health Kokua West Hawai'i

75-166 Kalani Street

Kailua Kona, HI 96740

www.mhkhawaii.weebly.com

808-331-1468 Phone

808-331-1378 Fax

12. Employment and Volunteer Programs

Senior Community Service Employment

Program

427 Kilauea Avenue

Hilo, HI 96720

808-935-6527 Office

County of Hawai'i Retired and Senior Volunteer Program

127 Kamana St.

Hilo, HI 96720

74-5044 Ane Keohokalole Hwy Kailua Kona

808-961-8730 Hilo Office

808-323-4333 Kona Office

Department of Vocational Services

Hawai'i Branch

75 Aupuni St. Rm 110 Hilo, HI

Kona Section (Field Office)

75-5722 Kuakini Hwy., Room 213 Kona, HI

808-974-6444 Branch Office

808-323-0025 Kona Field Office

American Job Center – Hawai'i Island

427 Kilauea Ave

Hilo, HI 96720

<http://health.hawaii.gov/phnb>

808-935-6527 Office

13. Fall Detection/Emergency Response Systems

Direct Link – Hawai'i Island

Chad and Shelly Ogata

808-966-6145

aloha@DirectLink911.com

www.HawaiiCounty.gov/department/fire

Belle + - Hawai'i Island

Clyde Nekoba

cmnekoba@HawaiiIntel.net

808-961-3260 Home

808-938-8210 Cell

Lifeline Hawai'i Services

Statewide Service

808-306-6424

www.lifelineHawaii.org

14. Financial

Catholic Charities Hawai'i

62 Kino'ole St

Hilo, HI 96720

www.catholiccharitieshawaii.org

808-935-4673 Office

United Way Hawai'i – Aloha Chapter

688 Kino'ole St. #201

Hilo, HI 96720

www.hiuw.org

808-935-6393 Office

211 Help Line

Hawai'i County Financial Empowerment Center – Free Financial Counseling

Free Financial Counseling

Hawaiian Community Assets

Hawaii First Federal Credit Union

**808-965-2708 Hawaiian Community
Assets**

**808-933-6600 Hawai'i First Federal
Credit Union**

BESSD – EBT and Financial Assistance

S. Hilo Unit – 1990 Kino'ole St. #108 Hilo, HI

<https://humanservices.Hawaii.gov/bessd/>

808-981-2754 S. Hilo

14. Financial (Cont.)

BESSD (Cont.) – EBT and Financial Assistance

95-5669 Mamalahoa Hwy Na'alehu, HI
75-5722 Hanama Pl Ste 1005 N. Kona, HI

808-939-2421 Kau

808-327-4980 N. Kona

Hawai'i County Economic Opportunity Council

47 Rainbow Drive
Hilo, HI 96720
www.hceoc.net

808-731 7009

Senior Discount Booklets

Park and Recreation/CSE Hawai'i County
Hilo, HI 96720
www.HawaiiCounty.gov/pr-elderly

808-961-8777 E. Hawai'i

808-323-4320 W. Hawai'i

Social Security Administration

111 East Puainako St.
Hilo, HI 96720

800-722-1213 Toll Free

www.ssa.gov

15. Food Resources

Hawai'i Food Basket

40 Holomua St. Hilo, HI. 96720
73-4161 Ulu Wini Pl. Kona, HI. 96740
www.Hawaiifoodbasket.org

808-933-6030 E. Hawai'i
808-322-1418 W. Hawai'i

Hawai'i County Nutrition Program

1055 Kino'ole Street Suite 102
Hilo, HI. 96720

808-961-8726
808-961-8025 TTY

Alu Like, Inc. – Kumu Kahi Program

32 Kino'ole St. #112
Hilo, HI. 96720
www.alulike.org

808-895-2158

Salvation Army

188 Kamehameha Ave.
Hilo, HI. 96720
www.Hawaii.salvationarmy.org

808-935-5531

16. Health Insurance Resources

Hawai'i State Health Insurance Assistance Program - SHIP

250 S. Hotel Street, Suite 406
Honolulu, HI 96813
www.Hawaiiiship.org

808-586-7229 Help Line
888-875-9229 Toll Free Line

Medicare

www.medicare.gov

1-800-633-4227 Toll Free
1-887-486-2048 TTY

Medquest

E. HI 1404 Kilauea Ave Hilo, HI
W.HI 75-5591 Palani Rd. Ste. 3004 Kona, HI
www.medquestHawaii.gov

808-933-0339 E. Hawai'i Office
808-327-4970 W. Hawai'i Office

17. Home Care Agencies

Aloha TLC Home Care

67-1161 Hawai'i Belt Rd
Kamuela, HI. 96743
www.alohatlchomecare.com

808-491-2273

Bayada Home Health Agency

1255 Kilauea Ave Suite 200
Hilo HI. 96720
www.bayada.com

808-933-1702

Hawai'i Care Solutions

399 Hualani St. Ste 16A
Hilo, HI 96720
www.hicareolutions1@gmail.com

808-961-6505

Helping Hands Healthcare

P.OP. Box 817
Volcano, HI 96785
www.helpinghands4u.com

808-747-2273

17. Home Care Agencies (cont.)

Master Care, Inc.

395 Kilauea Ave

Hilo, HI 96720

www.gomastercare.com

808-935-2230

MaxiCare - Link

311 Kino'ole St.

Hilo, HI 96720

www.maxicarelink.hilo@gmail.com

808-934-7733

Metrocare Hawai'i Plus

327 Kino'ole St.

Hilo, HI 96720

www.metrocreHawaii-plus.com

808-934-8334

Ultimacare Inc.

315 Kino'ole St

Hilo, HI 96720

www.ultimacareHawaii.com

808-933-9933

17. Home Care Agencies (cont.)

Kohala Home Health

67-1125 Mamalahoa Hwy

Waimea, HI 96743

www.queens.org/north-Hawaii

808-881-4711

Ace 1 LLC

101 Aupuni St. Suite 225

Hilo, HI 96720

www.ace1care.com

808-731-5520

Alpha Care Hawai'i Corp.

1289 Kilauea Ave Suite E

Hilo, HI 96720

www.alphacareHawaii.com

808-961-1929

18. Housing Resources

County of Hawai'i Office of Housing and Community Development

1990 Kino'ole St. Suite 105
Hilo HI. 96720

808-969-3327 E. Hawai'i

808-323-4300 W. Hawai'i

74-5044 Ane Keohokalole Hwy.
Kailua- Kona 96740

www.Hawaiicounty.gov/office-of-housing

State of Hawai'i Department of Human Services Public Housing Authority

600 Wailoa St
Hilo, HI 96720

808-933-0474

www.hpha.Hawaii.gov

19. Hospice and Palliative Care

Hawai'i Care Choices

1011 Waianuenue Ave

Hilo, HI 96720

www.Hawaiicarechoices.org

808-969-1733

Hospice of Kona

75-5925 Walua Rd.

Kailua-Kona, HI 96740

www.hospiceofkona.org

808-324-7700

North Hawai'i Hospice

65-1328 Kawaihae Rd.

Waimea, HI 96743

www.northHawaii hospice.org

808-885-7547

20. Legal Assistance

Legal Aid Society of Hawai'i

101 Aupuni St. Ste. 1002
Hilo, HI 96720

808-961-2851 Hilo

808-329-3910 Kona

75-56546 Kuakini Hwy
Kailua Kona, HI 96740

www.legalaidHawaii.org

Hawai'i Disability Rights Center

1132 Bishop St. Ste. 2102
Honolulu, HI 96813

1-800-882-1057 Toll Free

1-808-949-2900

www.Hawaiidisabilityrights.org

Ku'ikahi Mediation Center

101 Aupuni St. Suite 1014 B-2
Hilo, HI 96720

808-935-7844

www.Hawaiimediation.org

West Hawai'i Mediation Center

65-1291 Kawaihae Rd, Suite 103 B
Waimea, HI 96743

808-885-5525

www.whmediation.org

20. Legal Assistance (cont.)

County of Hawai'i Prosecuting Attorney's Office

655 Kilauea Ave Hilo, HI 96720

81-980 Haleki'i St. Ste. 150 Kona, HI 96740

www.Hawaiicounty.gov/prosecuting-attorney

808-961-0466 Hilo Office

808-322-2552 Kona office

Hawai'i State Office of the Public Defender

275 Ponahawai St. #201 Hilo, HI

75-1000 Henry St. Ste 209 Kona, HI 96740

www.publicdefender.Hawaii.gov

808-974-4571 Hilo

808-327-4650 Kona

21. Medical Equipment

Apria Health Care

811 Laukapu St. #9 Hilo, HI. 96720

www.apria.com

808-969-1211

Rainbow Medical Supply

224 Haili Street Suite B (in back)

Hilo, HI 96720

www.rainbowmedicalsupply.com

808-982-3834

Akana Medical Supplies

16-665 Milo Street, Unit 2A

Keaau, HI 96749

akanamedsupply@gmail.com

808-982-8321 Phone

808-966-4998 Fax

KTA Super Store Pharmacies

50 East Puainako St. Hilo, HI

65-1158 Mamalahoa Hwy. Kamuela, HI

68-3916 Paniolo Ave. Waikoloa Village, HI

78-6831 Ali'i Dr. Kailua-Kona, HI

www.ktasuperstores.com/pharmacy

808-959-8700 Hilo

808-885-0033 Kamuela

808-883-8434 Waikoloa

808-322-2511 Kona

22. Mental Health Services

Care Hawai'i

891 Ululani St. Hilo, HI. 96720

808-930-2810

Mental Health Kokua

208 Wainaku St. Hilo, HI

75-166 Kalani St. Kailua-Kona, HI

www.mentalhealthkokua.org

808-935-7167 E. Hawai'i

808-331-1468 W. Hawai'i

DOH Hawai'i Cares Call Center

<https://hicares.hawaii.gov>

808-832-3100 All Islands

1-800-753-6879 Toll Free

Hawai'i State Department of Health Community Mental Health Centers

37 Kekaulike St. Hilo, HI

45-3380 Mamane St. Honokaa, HI

15-2866 Pahoia Village Rd. Pahoia, HI

67-5189 Kamamalu St. Kamuela, HI

79-1020 Haukapila St. Kealahou, HI

2019-B Kaalaiki Rd. Naalehu, HI

808-974-4310

808-775-8834

808-965-2245

808-887-8118

808-322-4817

808-929-9220

NAMI – Big Island

www.namihawaii.org

info@namihawaii.org

808-591-1297 Office

23. Nursing Home and Acute Care

Hale Anuenue Restorative Care Center

133 Waianuenue Ave

Hilo, HI. 96720

www.haleanuenuecarecenter.com

808-961-6644

Hilo Medical Center's Extended Care Program

1190 Waianuenue Ave

Hilo, HI 96720

www.hilomedicalcenter.org

808-932-3570

Hale Ho'ola Hamakua

45-547 Plumeria St.

Honoka'a, HI 96727

www.halehoolahamakua.org

808-932-4100

Kau Hospital

One Kamani St.

Pahala, HI 96778

www.kauhospital.org

808-932-4200

23. Nursing Homes and Acute Care (cont.)

Kohala Hospital

54-383 Hospital Rd.

Kapaau, HI 96755

www.kohala.hhsc.org

808-889-6211

Legacy Hilo Rehabilitation and Nursing Center

563 Kaumana Dr.

Hilo, HI 96720

www.ohanapacific.com/locations/Hawaii-island/legacy-hilo

808-498-0100

Life Care Center

944 W. Kawailani St. Hilo, HI. 96720

78-6957 Kamehameha III Rd. Kailua Kona, HI
96740

808-959-9151 Hilo

808-322-2790 Kona

24. Senior Socialization

**Hawai'i County Park and Recreation
Department – Elderly Activities Division**

808-961-8708

127 Kamana St.

Hilo, HI 96720

www.Hawaiicounty.gov/divisions/elderly-activities

**Elderly Recreation Services - Kamana Senior
Center**

808-961-8710

127 Kamana St. Rm 1

Hilo, HI 96720

www.Hawaiicounty.gov/divisions/elderly-activities

Elderly Recreation Services – Puna/Kau

808-966-5801

16-186 Pili Mua St. Keaau, HI 96749

15-3016 Kauhale St. Pahoa, HI 96778

16-512 Volcano Rd. Keaau, HI 96749

95-5635 Mamalahoa Hwy. Naalehu, HI

www.Hawaiicounty.gov/divisions/elderly-activities

Elderly Recreation Services – West Hawai'i

808-323-4340

74-5044 Ane Keohokalole Hwy Bldg. B

Kailua-Kona, HI 96740

www.Hawaiicounty.gov/divisions/elderly-activities

25. Transportation

Hawai'i County Economic Opportunity Council

47 Rainbow Drive

Hilo, HI 96720

www.hceoc.net

808-731-7009

Hawai'i County Mass Transit Agency

Hele-On Kako'o Paratransit – Kona

Hele-On Bus

Shared Ride Taxi

www.HawaiiCounty.gov/mass-transit

808-961-8744

808-967-8744

808-961-8744

Hawai'i County Parks and Rec. Department – Coordinated Services for the Elderly

1055 Kino'ole St. Suite 106

Hilo, HI 96720

74-5044 Ane Keohokalole Hwy,

Kailua-Kona, HI 96740

808-961-8777

808-961-8025 TTY

808-323-4320

808-961-8025 TTY

25. Transportation (cont.)

Hui Malama Ola Na Oihi

1438 Kilauea Ave

Hilo, HI 96720

www.hmono.org

808-969-9220

Aloha Angel Transport

www.alohaangeltransport@gmail.com

808-796-3018

26. Veteran Services

State of Hawai'i Office of Veteran's Services

1304 Kekuanaoa St. Suite L 102 Hilo, HI 96720

73-4976 Kamanu St. Suite 207 Kona, HI 96740

www.dod.Hawaii.gov/ovs/

808-369 3538 Hilo

808-844-6664 Kona

US Veteran's Affairs Office

1285 Waianuenue Ave # 211 Hilo, HI 96720

75-377 Hualalai Rd. Kailua Kona, HI 96740

808-935-3781 Hilo

808-329-0774 Kona

VA Clinic – 45 Mouhouli St Hilo HI

808-935-3781

VA Benefits Counselor

808-935-6163 - Hilo

Kona Veteran's Center

73-4976 Kamanu St. Suite 207

Kailua-Kona, HI 96740

808-329-0574

Yukio State Veteran's Home

1180 Waianuenue Ave

Hilo, HI 96720

www.yukiookutsustateveteranshome.org

808-961-1500

27. Additional Resources

Neighborhood Place of Puna – Coordination Center

16-105 Opukahaia St.

Keaau, HI 96749

www.neighborhoodplaceofpuna.org

- The Coordination Center helps residents find, navigate, and connect with housing, financial, and health-related resources offered in our community.
-

808-501-1413

Hawai'i County Community Paramedicine Program

- In home fall/fire prevention assessments. Project lifesaver program. Education on when to use EMS services
-

808-338-0225 E. Hawai'i

808-937-7964 W. Hawai'i

Soderholm Mobility

2044 Dillingham Blvd

Honolulu, HI 96819

Soderholm.bus.com

- Vehicle modifications for disabled drivers
-

1-808-834-1417

Community First Hawai'i

www.communityfirsthawaii.org/registration

- Provides step-by-step to complete your Advanced Health Care Directives. Workshops are held via zoom or in person.
-

808-987-1230 to Register

Waikoloa Loan Closet

68-1845 Waikoloa Rd Suite 221

Waikoloa, HI 96738

- Borrow or donate assisted devices such as walkers, wheelchairs, canes and more.

808-756-7186

THE AGING AND DISABILITY RESOURCE CENTER

An access point for information, resources, and referrals

ADRC RESOURCE LIBRARY

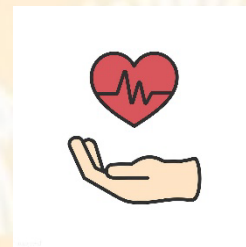
Your one-stop for brochures, literature, and information to safely age-in-place on the Big Island. Find information on local programs, assistance, services, and activities for Kupuna.



BETTER CHOICES BETTER HEALTH

An evidence-based program designed to help individuals manage their chronic diseases and make choices to support a healthier lifestyle. It's never too late to make a change!

Call The Hawai'i County Office of Aging at 808-961-8600 for information.



LEGAL AID

The Legal Aid Society of Hawai'i can assist with legal documents and more. Contact our office at 808-961-8626 to request a referral for free legal services from Legal Aid Society of Hawai'i. Client must be at least 60 years old and a resident of Hawai'i Island.



EMERGENCY PREPAREDNESS PLANNING

Do you feel prepared to face another emergency? The ADRC has a program that can help you plan for the future.

Visit our website at: www.hcoaHawaii.gov to print the Emergency Preparedness Plan workbook and watch a short video that guides you in completing your Emergency Plan. You can also call the ADRC to ask for a workbook.

