

# **RESOURCE DIRECTORY**

Provided by the Aging and  
Disability Resource Center and  
Hawai'i County Office of Aging

2023  
1<sup>st</sup> Edition

## What is the Aging and Disability Resource Center (ADRC)?

The ADRC is an access point for older individuals, people with disabilities and caregivers.

The ADRC provides information, awareness and referrals island-wide. Aging and Disability Specialists are prepared to help individuals find information on supports and services provided throughout the island. They are also available to meet with families to provide Option Counseling to help people plan for long-term support needs. Option counseling may be conducted over the phone or in person. To make sure we can best serve you, it is helpful if you call to make an appointment.

This directory was developed to assist Hawai'i Island's seniors, individuals with disabilities, caregivers, and families in finding meaningful resources. This is a list of resources for most asked about items; this is not a complete list of all island resources. Please contact the Aging and Disability Resource Center (ADRC) with questions or if you need assistance with connecting to resources.

The following is provided as public information by the Hawai'i County Office of Aging and The Aging and Disability Resource Center. This information is not a complete or comprehensive list of all resources who are qualified or licensed in the County of Hawai'i. This list of resources does not constitute an endorsement, recommendation or determination of fitness to provide professional services to the public or any person or entities by the County of Hawai'i. It is your responsibility to verify and investigate the service providers. The County of Hawai'i assumes no liability for any actions, non-action, or business conducted with these resources.

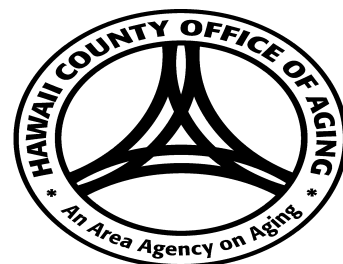
This project funded in part by the County of Hawai'i, the State Executive Office on Aging, and through the Title III funding of the Older Americans Act.

ADRC – Hilo (808) 961-8626

ADRC – Kona (808) 323-4392

HCOA – Hilo (808) 961-8600

HCOA – Kona (808) 323-4390



# Directory Contents

1. Hospitals
2. Area Agency on Aging
3. Emergency Numbers
4. Adult Day Centers
5. Alzheimer's Association
6. Blind and Deaf Services
7. Caregiver Resources
8. Case Management Agencies
9. Disability Resources
10. Elder Abuse
11. Emergency Shelters/Homeless Supports
12. Employment and Volunteer Programs
13. Fall Detection/Emergency Response Devices
14. Financial Help
15. Food Resources
16. Health Insurance Resources
17. Home Care Agencies
18. Housing Resources
19. Hospice and Palliative Care
20. Legal Assistance
21. Medical Equipment
22. Mental Health Services
23. Nursing Homes and Acute Care
24. Senior Socialization
25. Transportation
26. Veteran Services
27. Additional Resources

## 1. Hospitals

---

### **Hilo Medical Center**

1190 Waianuenue Ave

Hilo, HI 96720

[www.hilomedicalcenter.org](http://www.hilomedicalcenter.org)

**808-932-3000**

---

### **Kona Community Hospital**

79-1019 Haukapila St

Kealahou, HI 96750

[www.kch.hhsc.org](http://www.kch.hhsc.org)

**808-322-9311**

---

### **Kau Hospital**

1 Kamani St.

Pahala, HI 96777

[www.kauhospital.org](http://www.kauhospital.org)

**808-932-4200**

---

### **Queens North Hawai'i Community Hospital**

67-1125 Hawai'i Belt Road

Waimea, HI 96743

[www.queens.org/north-hawaii](http://www.queens.org/north-hawaii)

**808-885-4444**

## **2. Area Agency on Aging and Hawai'i County Office of Aging**

---

### **Hawai'i County office of Aging**

1055 Kino'ole St. Suite 101

Hilo, HI 96720

[www.hcoahawaii.org](http://www.hcoahawaii.org)

**808-961-8603 Office**

**808-961-8603 Fax**

---

### **Hawai'i County Office of Aging**

74-5044 Ane Keohokalole Hwy - Bldg. B

Kailua Kona, HI 96740

[www.hcoahawaii.org](http://www.hcoahawaii.org)

**808-323-4390 Office**

**808-323-4398 Fax**

---

### **Aging and Disability Resource Center**

1055 Kino'ole St.

Hilo, HI 96720

[www.hcoahawaii.org](http://www.hcoahawaii.org)

**808-961-8626 Office**

**808-961-8603 Fax**

---

### **Aging and Disability Resource Center**

740-5044 Ane Keohokalole Hwy – Bldg. B

Kailua Kona, HI 96740

[www.hcoahawaii.org](http://www.hcoahawaii.org)

**808-323-4392 Office**

**808-323-4398 Fax**

### 3. Emergency Numbers

---

#### **Hawai'i Police Department - Hilo**

349 Kapiolani St

Hilo, Hawai'i 96720

[www.hawaiipolice.com](http://www.hawaiipolice.com)

**808-935-3311 Non-Emergency**

**911 Emergency**

---

#### **Hawai'i Police Department - Kona**

74-611 Hale Maka'i Place.

Kailua-Kona, HI 96740

[www.hawaiipolice.com](http://www.hawaiipolice.com)

**808-326-4646 Non-Emergency**

**911 Emergency**

---

#### **Hawai'i Police Department- Keaau**

16-200 Pili Mua St.

Keaau, HI 96749

[www.hawaiipolice.com](http://www.hawaiipolice.com)

**808-966-5835 Non-Emergency**

**911 Emergency**

---

#### **Hawai'i Police Department- Honoka'a**

45-3400 Mamane St.

Honoka'a, HI 96727

[www.hawaiipolice.com](http://www.hawaiipolice.com)

**808-775-7533 Non-Emergency**

**911 Emergency**

### 3. Emergency Numbers

---

#### **Waimea Police Station**

67-5185 Kamamalu St  
Kamuela, HI 96743  
[www.hawaiipolice.com](http://www.hawaiipolice.com)

**808-887-3080 Non-Emergency**  
**911 Emergency**

---

#### **Pahoa Police Station**

15-2615 Keaau-Pahoa Rd.  
Pahoa, HI 96749  
[www.hawaiipolice.com](http://www.hawaiipolice.com)

**808-965-2716 Non-Emergency**  
**911 Emergency**

---

#### **Laupahoehoe Police Station**

36-2285 Old Mamalahoa Hwy  
Laupahoehoe, HI 96764  
[www.hawaiipolice.com](http://www.hawaiipolice.com)

**808-962-2146 Non-Emergency**  
**911 Emergency**

---

#### **Kapa'au Police Station**

54-3900 Akoni Pule Hwy  
Kapa'au, HI 96755  
[www.hawaiipolice.com](http://www.hawaiipolice.com)

**808-889-6540 Non-Emergency**  
**911 Emergency**

### 3. Emergency Numbers

---

#### **Hawai'i County Fire Department - DISPATCH**

466 Kino'ole St

Hilo, HI 96720

[www.hawaiicounty.gov/deparments/fire](http://www.hawaiicounty.gov/deparments/fire)

**808-961-8336 DISPATCH**

**911 Emergency**

---

#### **Kailua Kona Fire Station**

74-5537 Palani Rd

Kailua Kona, HI 96740

[www.hawaiicounty.gov/department/fire](http://www.hawaiicounty.gov/department/fire)

**808-327-3545 Non-Emergency**

**911 Emergency**

---

#### **Keauhou Fire Station**

78-7159 Puuloa Rd

Kailua Kona, HI 96760

[www.hawaiicounty.gov/department/fire](http://www.hawaiicounty.gov/department/fire)

**808-322-5627 Non-Emergency**

**911 Emergency**

---

#### **Waimea Fire Station**

67-5175 Kamamalu St.

Kamuela, HI 96743

[www.hawaiicounty.gov/department/fire](http://www.hawaiicounty.gov/department/fire)

**808-887-3021 Non-Emergency**

**911 Emergency**



### 3. Emergency Numbers

---

#### **Waikoloa Fire Station**

68-1771 Pua Melia St

Waikoloa Village, HI 96738

[www.hawaiicounty.gov/department/fire](http://www.hawaiicounty.gov/department/fire)

**808-883-6101 Non-Emergency**

**911 Emergency**

---

#### **Captain Cook Fire Station**

82-6120 Mamalahoa Hwy

Ocean View, HI 96704

[www.hawaiicounty.gov/department/fire](http://www.hawaiicounty.gov/department/fire)

**808-323-3636 Non-Emergency**

**911 Emergency**

---

#### **Pahao Fire Station**

15-2605 Keaau-Pahoa Rd

Pahao, HI 96778

[www.hawaiicounty.gov/department/fire](http://www.hawaiicounty.gov/department/fire)

**808-965-2708 Non-Emergency**

**911 Emergency**

---

#### **Keaau Fire Station**

16-579 Old Volcano Rd

Keaau, HI 96749

[www.hawaiicounty.gov/department/fire](http://www.hawaiicounty.gov/department/fire)

**808-966-5809 Non-Emergency**

**911 Emergency**

### 3. Emergency Numbers

---

#### **South Kohala Fire Station**

68-4550 Queen Kaahumanu Hwy

Kamuela, HI 96743

[www.hawaiicounty.gov/department/fire](http://www.hawaiicounty.gov/department/fire)

**808-885-5799 Non-Emergency**

**911 Emergency**

---

#### **Makalei Fire Station**

72-4077 Mamalahoa Hwy

Kailua Kona, HI 96740

[www.hawaiicounty.gov/department/fire](http://www.hawaiicounty.gov/department/fire)

**808-932-2900 Non-Emergency**

**911 Emergency**

---

#### 4. Adult Day Care Centers

---

**Hawai'i Island Adult Care**

561 Kupuna Place

Hilo, HI 96720

[www.hawaiiislandadultcare.org](http://www.hawaiiislandadultcare.org)

**808-961-3747 Phone**

**808-961-3740 Fax**

---

## 5. Alzheimer's and Dementia

---

### **Alzheimer's Association Aloha Chapter**

1670 Makaloa St. Suite 204-316

Honolulu, HI. 96814

[www.alz.org/hawaii](http://www.alz.org/hawaii)

**808-591-2771 State wide**

**1-800-272-3900 Nationwide 24/7  
Helpline**

---

### **Alzheimer's Association Aloha Chapter**

**Big Island – Nicolas Los Banos**

**Hawai'i Island Regional Coordinator**

**808-518-6649 Hawai'i Island**

**[nklosbanos@alz.org](mailto:nklosbanos@alz.org)**

---

## 6. Blind and Deaf Services

---

### **Ho'opono Services for the Blind**

75 Aupuni Street, Suite 110 Hilo, HI 96720

75-5722 Konkani Hwy, Kona, HI 96740

<https://humanservices.hawaii.gov/vr/hoopono>

**808-586-5269 TDD/V/TTY**

**808-323-0025 V/TTY**

---

### **Captel Phone for Hearing Impaired**

[www.Hawaiicaptel.com](http://www.Hawaiicaptel.com)

Email: [Captel@captel.com](mailto:Captel@captel.com)

**888-269-7477**

---

### **Hawai'i Association for the Blind**

P.O. Box 60640

Ewa Beach HI, 96706

[www.Acb.org/Hawaii](http://www.Acb.org/Hawaii)

Email: [Hab50@hotmail.com](mailto:Hab50@hotmail.com)

**808-521-7648**

---

## 7. Caregiver Resources

---

### **Hawai'i Community Caregiver Network**

**Email:**

**Hccn@hawaiicaregivers.org**

<https://hawaiicaregiver.org>

---

### **Alu Like, Inc. Kumu Kahi Program**

**808-895-2158**

32 Kino'ole St. #112

Hilo, HI 96720

[www.alulike.org](http://www.alulike.org)

---

### **Aging and Disability Resource Center**

**808-961-8626 Hilo**

1055 Kino'ole St. Hilo, HI

**808-323-4392 Kona**

74-5044 Ane Keohokalole Hwy Bldg. B Kona, HI

[www.hcoahawaii.org](http://www.hcoahawaii.org)

---

## 8. Case Management Agencies

---

### **Blue Water Resources, Inc.**

688 Kino'ole St. Suite 101

Hilo, HI 96720

[www.808bwr.com](http://www.808bwr.com)

**808-443-5112 Office**

**808-935-3595 Fax**

---

### **Case Management Professionals**

94-235 Hanawai Circle #1B

Waipahu, HI 96797

[www.casemanagementpro.com](http://www.casemanagementpro.com)

**808-689-1937 Office**

**877-689-1936 Fax**

---

### **Services for Seniors**

32 Kino'ole St. Suite 107 and 109

Hilo, HI 96720

[www.sfshawaii.org](http://www.sfshawaii.org)

**808-935-1144 Office**

**808-935-1143 Fax**

---

### **State Department of Health- Public Health Nursing**

75 Aupuni St. Hilo, HI

79-1015 Haukapila Street, Kealahou, HI

<http://health.hawaii.gov/phnb>

**808-974-6025 Phone Hilo**

**808-322-1500 Phone Kona**

## 9. Disability Resources

---

### **Aloha Independent Living Hawai'i**

1055 Kino'ole St. Suite 202

Hilo, HI 96720

[www.AlohaLHawaii.org](http://www.AlohaLHawaii.org)

Email: [info@AlohaLHawaii.org](mailto:info@AlohaLHawaii.org)

**808-339-7297 Office**

**1-800-385-2454 Toll Free**

---

### **Arc of Hilo**

1099 Waianuenue Ave

Hilo, HI 96720

[www.hiloarc.org](http://www.hiloarc.org)

**808-935-8535 Office**

**808-934-7714 Fax**

---

### **Arc of Kona**

81-990 Kaleki'i St

Kealahou, HI

[www.arcofkona.org](http://www.arcofkona.org)

**808-323-2626 Office**

**808-323-9444 Fax**

---

### **Department of Health Developmental Disabilities Division**

78 Aupuni St.– Hilo, HI

67-5189 Kamamalu St. - Kamuela, HI

75-184 Hulualai Rd. # 201– Kailua-Kona, HI

**808-974-4280 Hilo**

**808-887-6064 Kamuela**

**808-327-6212 Kona**



## 10. Elder Abuse

---

### **Adult Protective Services**

E. Hawai'i - Hilo/Hamakua/Puna  
W. Hawai'i – Kau/Kona/Kohala/Kamuela

**808-832-5115 State Wide Intake Line**  
**808-933-8820 Office – E. HI**  
**808-327-6280 Office - W. HI**

---

### **Better Business Bureau – Fraud Hotline**

**Office of the Securities Commissioner  
Fraud Hotline**

**808-628-3950 Office**  
**1-888-333-1593 Toll Free**  
**1-877-HI-SCAMS**

---

### **Senior Medicare Patrol - SMP**

250 South Hotel St. Suite 406  
Honolulu, HI 96813  
[www.smphawaii.org](http://www.smphawaii.org)

**808-586-7281**  
**808-296-9422 Toll Free**

---

### **National Domestic Violence Hotline**

Available 24/7 365 days per year

**1-800-799-7233 Toll Free**  
**1-855-812-1001 Video Calls for Deaf  
Callers – M – F 9:00 am – 5:00 p.m.  
PST**

## 11. Emergency Shelters/Homeless Supports

---

### **HOPE Services - Outreach**

115 Kapiolani St

Hilo, HI 96720

[www.hopeserviceshawaii.org](http://www.hopeserviceshawaii.org)

**808-935-3050 Office**

**1-800-385-2454 Toll Free**

---

### **Hope Services - Shelters**

Kihei Pua Shelter – Hilo, HI

West HI Emergency Shelter – Kona, HI

Hale Maluhia Men's Shelter

Keolahou Men's Shelter – Hilo, HI

**808-937-1837 Pua Shelter**

**808-217-5560 W. HI Shelter**

**808-443-4717 – Hale Men**

**808-217-7370 Keolahou Men**

---

### **Mental Health Kokua East Hawai'i**

208 Wainaku Ave

Hilo, HI 96720

[www.mhkhawaii.weebly.com](http://www.mhkhawaii.weebly.com)

**808-935-7167 Phone**

**808-933-1212 Fax**

---

### **Mental Health Kokua West Hawai'i**

75-166 Kalani Street

Kailua Kona, HI 96740

[www.mhkhawaii.weebly.com](http://www.mhkhawaii.weebly.com)

**808-331-1468 Phone**

**808-331-1378 Fax**

## **12. Employment and Volunteer Programs**

---

### **Senior Community Service Employment**

Program

427 Kilauea Avenue

Hilo, HI 96720

**808-935-6527 Office**

---

### **County of Hawai'i Retired and Senior Volunteer Program**

127 Kamana St.

Hilo, HI 96720

74-5044 Ane Keohokalole Hwy Kailua Kona

**808-961-8730 Hilo Office**

**808-323-4333 Kona Office**

---

### **Department of Vocational Services**

Hawai'i Branch

75 Aupuni St. Rm 110 Hilo, HI

Kona Section (Field Office)

75-5722 Kuakini Hwy., Room 213 Kona, HI

**808-974-6444 Branch Office**

**808-323-0025 Kona Field Office**

---

### **American Job Center – Hawai'i Island**

427 Kilauea Ave

Hilo, HI 96720

<http://health.hawaii.gov/phnb>

**808-935-6527 Office**

## 13. Fall Detection/Emergency Response Systems

---

### **Direct Link – Hawai'i Island**

Chad and Shelly Ogata

**808-966-6145**

**aloha@DirectLink911.com**

[www.HawaiiCounty.gov/department/fire](http://www.HawaiiCounty.gov/department/fire)

---

### **Belle + - Hawai'i Island**

Clyde Nekoba

[cmnekoba@HawaiiIntel.net](mailto:cmnekoba@HawaiiIntel.net)

**808-961-3260 Home**

**808-938-8210 Cell**

---

### **Lifeline Hawai'i Services**

Statewide Service

**808-306-6424**

[www.lifelineHawaii.org](http://www.lifelineHawaii.org)

---

## 14. Financial

---

### **Catholic Charities Hawai'i**

62 Kino'ole St

Hilo, HI 96720

[www.catholiccharitieshawaii.org](http://www.catholiccharitieshawaii.org)

**808-935-4673 Office**

---

### **United Way Hawai'i – Aloha Chapter**

688 Kino'ole St. #201

Hilo, HI 96720

[www.hiuw.org](http://www.hiuw.org)

**808-935-6393 Office**

**211 Help Line**

---

### **Hawai'i County Financial Empowerment Center – Free Financial Counseling**

#### **Free Financial Counseling**

Hawaiian Community Assets

Hawaii First Federal Credit Union

**808-965-2708 Hawaiian Community  
Assets**

**808-933-6600 Hawai'i First Federal  
Credit Union**

---

### **BESSD – EBT and Financial Assistance**

S. Hilo Unit – 1990 Kino'ole St. #108 Hilo, HI

<https://humanservices.Hawaii.gov/bessd/>

**808-981-2754 S. Hilo**

## 14. Financial (Cont.)

---

### **BESSD (Cont.) – EBT and Financial Assistance**

95-5669 Mamalahoa Hwy Na'alehu, HI  
75-5722 Hanama PI Ste 1005 N. Kona, HI

**808-939-2421 Kau**

**808-327-4980 N. Kona**

---

### **Hawai'i County Economic Opportunity Council**

47 Rainbow Drive  
Hilo, HI 96720  
[www.hceoc.net](http://www.hceoc.net)

**808-731 7009**

---

### **Senior Discount Booklets**

Park and Recreation/CSE Hawai'i County  
Hilo, HI 96720  
[www.Hawaiicounty.gov/pr-elderly](http://www.Hawaiicounty.gov/pr-elderly)

**808-961-8777 E. Hawai'i**

**808-323-4320 W. Hawai'i**

---

### **Social Security Administration**

111 East Puainako St.  
Hilo, HI 96720

**800-722-1213 Toll Free**

**[www.ssa.gov](http://www.ssa.gov)**

## 15. Food Resources

---

### **Hawai'i Food Basket**

40 Holomua St. Hilo, HI. 96720  
73-4161 Ulu Wini Pl. Kona, HI. 96740  
[www.Hawaiifoodbasket.org](http://www.Hawaiifoodbasket.org)

**808-933-6030 E. Hawai'i**  
**808-322-1418 W. Hawai'i**

---

### **Hawai'i County Nutrition Program**

1055 Kino'ole Street Suite 102  
Hilo, HI. 96720

**808-961-8726**  
**808-961-8025 TTY**

---

### **Alu Like, Inc. – Kumu Kahi Program**

32 Kino'ole St. #112  
Hilo, HI. 96720  
[www.alulike.org](http://www.alulike.org)

**808-895-2158**

---

### **Salvation Army**

188 Kamehameha Ave.  
Hilo, HI. 96720  
[www.Hawaii.salvationarmy.org](http://www.Hawaii.salvationarmy.org)

**808-935-5531**

## 16. Health Insurance Resources

---

### **Hawai'i State Health Insurance Assistance Program - SHIP**

250 S. Hotel Street, Suite 406  
Honolulu, HI 96813  
[www.Hawaiiiship.org](http://www.Hawaiiiship.org)

**808-586-7229 Help Line**  
**888-875-9229 Toll Free Line**

---

### **Medicare**

[www.medicare.gov](http://www.medicare.gov)

**1-800-633-4227 Toll Free**  
**1-887-486-2048 TTY**

---

### **Medquest**

E. HI 1404 Kilauea Ave Hilo, HI  
W.HI 75-5591 Palani Rd. Ste. 3004 Kona, HI  
[www.medquestHawaii.gov](http://www.medquestHawaii.gov)

**808-933-0339 E. Hawai'i Office**  
**808-327-4970 W. Hawai'i Office**

---



## 17. Home Care Agencies

---

### **Aloha TLC Home Care**

67-1161 Hawai'i Belt Rd  
Kamuela, HI. 96743  
[www.alohatlchomecare.com](http://www.alohatlchomecare.com)

**808-491-2273**

---

### **Bayada Home Health Agency**

1255 Kilauea Ave Suite 200  
Hilo HI. 96720  
[www.bayada.com](http://www.bayada.com)

**808-933-1702**

---

### **Hawai'i Care Solutions**

399 Hualani St. Ste 16A  
Hilo, HI 96720  
[www.hicareolutions1@gmail.com](mailto:www.hicareolutions1@gmail.com)

**808-961-6505**

---

### **Helping Hands Healthcare**

P.OP. Box 817  
Volcano, HI 96785  
[www.helpinghands4u.com](http://www.helpinghands4u.com)

**808-747-2273**

## 17. Home Care Agencies (cont.)

---

### **Master Care, Inc.**

395 Kilauea Ave

Hilo, HI 96720

[www.gomastercare.com](http://www.gomastercare.com)

**808-935-2230**

---

### **MaxiCare - Link**

311 Kino'ole St.

Hilo, HI 96720

[www.maxicarelink.hilo@gmail.com](http://www.maxicarelink.hilo@gmail.com)

**808-934-7733**

---

### **Metrocare Hawai'i Plus**

327 Kino'ole St.

Hilo, HI 96720

[www.metrocreHawaii-plus.com](http://www.metrocreHawaii-plus.com)

**808-934-8334**

---

### **Ultimacare Inc.**

315 Kino'ole St

Hilo, HI 96720

[www.ultimacareHawaii.com](http://www.ultimacareHawaii.com)

**808-933-9933**

## 17. Home Care Agencies (cont.)

---

### **Kohala Home Health**

67-1125 Mamalahoa Hwy

Waimea, HI 96743

[www.queens.org/north-Hawaii](http://www.queens.org/north-Hawaii)

**808-881-4711**

---

### **Ace 1 LLC**

101 Aupuni St. Suite 225

Hilo, HI 96720

[www.ace1care.com](http://www.ace1care.com)

**808-731-5520**

---

### **Alpha Care Hawai'i Corp.**

1289 Kilauea Ave Suite E

Hilo, HI 96720

[www.alphacareHawaii.com](http://www.alphacareHawaii.com)

**808-961-1929**

---

## 18. Housing Resources

---

### **County of Hawai'i Office of Housing and Community Development**

1990 Kino'ole St. Suite 105  
Hilo HI. 96720

**808-969-3327 E. Hawai'i**

**808-323-4300 W. Hawai'i**

74-5044 Ane Keohokalole Hwy.  
Kailua- Kona 96740

[www.Hawaiicounty.gov/office-of-housing](http://www.Hawaiicounty.gov/office-of-housing)

---

### **State of Hawai'i Department of Human Services Public Housing Authority**

600 Wailoa St  
Hilo, HI 96720

**808-933-0474**

[www.hpha.Hawaii.gov](http://www.hpha.Hawaii.gov)

---

## 19. Hospice and Palliative Care

---

### **Hawai'i Care Choices**

1011 Waianuenue Ave

Hilo, HI 96720

[www.Hawaiicarechoices.org](http://www.Hawaiicarechoices.org)

**808-969-1733**

---

### **Hospice of Kona**

75-5925 Walua Rd.

Kailua-Kona, HI 96740

[www.hospiceofkona.org](http://www.hospiceofkona.org)

**808-324-7700**

---

### **North Hawai'i Hospice**

65-1328 Kawaihae Rd.

Waimea, HI 96743

[www.northHawaii hospice.org](http://www.northHawaii hospice.org)

**808-885-7547**

---

## 20. Legal Assistance

---

### **Legal Aid Society of Hawai'i**

101 Aupuni St. Ste. 1002  
Hilo, HI 96720

75-56546 Kuakini Hwy  
Kailua Kona, HI 96740

[www.legalaidHawaii.org](http://www.legalaidHawaii.org)

**808-961-2851 Hilo**

**808-329-3910 Kona**

---

### **Hawai'i Disability Rights Center**

1132 Bishop St. Ste. 2102

Honolulu, HI 96813

[www.Hawaiidisabilityrights.org](http://www.Hawaiidisabilityrights.org)

**1-800-882-1057 Toll Free**

**1-808-949-2900**

---

### **Ku'ikahi Mediation Center**

101 Aupuni St. Suite 1014 B-2

Hilo, HI 96720

[www.Hawaiimediation.org](http://www.Hawaiimediation.org)

**808-935-7844**

---

### **West Hawai'i Mediation Center**

65-1291 Kawaihae Rd, Suite 103 B

Waimea, HI 96743

[www.whmediation.org](http://www.whmediation.org)

**808-885-5525**

## 20. Legal Assistance (cont.)

---

### **County of Hawai'i Prosecuting Attorney's Office**

655 Kilauea Ave Hilo, HI 96720

81-980 Haleki'i St. Ste. 150 Kona, HI 96740

[www.Hawaiicounty.gov/prosecuting-attorney](http://www.Hawaiicounty.gov/prosecuting-attorney)

**808-961-0466 Hilo Office**

**808-322-2552 Kona office**

---

### **Hawai'i State Office of the Public Defender**

275 Ponahawai St. #201 Hilo, HI

75-1000 Henry St. Ste 209 Kona, HI 96740

[www.publicdefender.Hawaii.gov](http://www.publicdefender.Hawaii.gov)

**808-974-4571 Hilo**

**808-327-4650 Kona**

---

## 21. Medical Equipment

---

### **Apria Health Care**

811 Laukapu St. #9 Hilo, HI. 96720

[www.apria.com](http://www.apria.com)

**808-969-1211**

---

### **Rainbow Medical Supply**

224 Haili Street Suite B (in back)

Hilo, HI 96720

[www.rainbowmedicalsupply.com](http://www.rainbowmedicalsupply.com)

**808-982-3834**

---

### **Akana Medical Supplies**

16-665 Milo Street, Unit 2A

Keaau, HI 96749

[akanamedsupply@gmail.com](mailto:akanamedsupply@gmail.com)

**808-982-8321 Phone**

**808-966-4998 Fax**

---

### **KTA Super Store Pharmacies**

50 East Puainako St. Hilo, HI

65-1158 Mamalahoa Hwy. Kamuela, HI

68-3916 Paniolo Ave. Waikoloa Village, HI

78-6831 Ali'i Dr. Kailua-Kona, HI

[www.ktasuperstores.com/pharmacy](http://www.ktasuperstores.com/pharmacy)

**808-959-8700 Hilo**

**808-885-0033 Kamuela**

**808-883-8434 Waikoloa**

**808-322-2511 Kona**



## 22. Mental Health Services

---

### Care Hawai'i

891 Ululani St. Hilo, HI. 96720

**808-930-2810**

---

### Mental Health Kokua

208 Wainaku St. Hilo, HI

75-166 Kalani St. Kailua-Kona, HI

[www.mentalhealthkokua.org](http://www.mentalhealthkokua.org)

**808-935-7167 E. Hawai'i**

**808-331-1468 W. Hawai'i**

---

### DOH Hawai'i Cares Call Center

<https://hicares.hawaii.gov>

**808-832-3100 All Islands**

**1-800-753-6879 Toll Free**

---

### Hawai'i State Department of Health Community Mental Health Centers

37 Kekaulike St. Hilo, HI

45-3380 Mamane St. Honokaa, HI

15-2866 Pahoia Village Rd. Pahoia, HI

67-5189 Kamamalu St. Kamuela, HI

79-1020 Haukapila St. Kealahou, HI

2019-B Kaalaiki Rd. Naalehu, HI

**808-974-4310**

**808-775-8834**

**808-965-2245**

**808-887-8118**

**808-322-4817**

**808-929-9220**

## 23. Nursing Homes and Acute Care

---

### **Hale Anuenue Restorative Care Center**

**808-961-6644**

133 Waianuenue Ave

Hilo, HI. 96720

[www.haleanuenuecarecenter.com](http://www.haleanuenuecarecenter.com)

---

### **Hilo Medical Center's Extended Care Program**

**808-932-3570**

1190 Waianuenue Ave

Hilo, HI 96720

[www.hilomedicalcenter.org](http://www.hilomedicalcenter.org)

---

### **Hale Ho'ola Hamakua**

**808-932-4100**

45-547 Plumeria St.

Honoka'a, HI 96727

[www.halehoolahamakua.org](http://www.halehoolahamakua.org)

---

### **Kau Hospital**

**808-932-4200**

One Kamani St.

Pahala, HI 96778

[www.kauhospital.org](http://www.kauhospital.org)

## 23. Nursing Homes and Acute Care (cont.)

---

### **Kohala Hospital**

54-383 Hospital Rd.

Kapaau, HI 96755

[www.kohala.hhsc.org](http://www.kohala.hhsc.org)

**808-889-6211**

---

### **Legacy Hilo Rehabilitation and Nursing Center**

563 Kaumana Dr.

Hilo, HI 96720

[www.ohanapacific.com/locations/Hawaii-island/legacy-hilo](http://www.ohanapacific.com/locations/Hawaii-island/legacy-hilo)

**808-498-0100**

---

### **Life Care Center**

944 W. Kawaihani St. Hilo, HI. 96720

78-6957 Kamehameha III Rd. Kailua Kona, HI  
96740

**808-959-9151 Hilo**

**808-322-2790 Kona**

---

## 24. Senior Socialization

---

**Hawai'i County Park and Recreation  
Department – Elderly Activities Division**

**808-961-8708**

127 Kamana St.

Hilo, HI 96720

[www.Hawaiicounty.gov/divisions/elderly-activities](http://www.Hawaiicounty.gov/divisions/elderly-activities)

---

**Elderly Recreation Services - Kamana Senior  
Center**

**808-961-8710**

127 Kamana St. Rm 1

Hilo, HI 96720

[www.Hawaiicounty.gov/divisions/elderly-activities](http://www.Hawaiicounty.gov/divisions/elderly-activities)

---

**Elderly Recreation Services – Puna/Kau**

**808-966-5801**

16-186 Pili Mua St. Keaau, HI 96749

15-3016 Kauhale St. Pahoa, HI 96778

16-512 Volcano Rd. Keaau, HI 96749

95-5635 Mamalahoa Hwy. Naalehu, HI

[www.Hawaiicounty.gov/divisions/elderly-activities](http://www.Hawaiicounty.gov/divisions/elderly-activities)

---

**Elderly Recreation Services – West Hawai'i**

**808-323-4340**

74-5044 Ane Keohokalole Hwy Bldg. B

Kailua-Kona, HI 96740

[www.Hawaiicounty.gov/divisions/elderly-activities](http://www.Hawaiicounty.gov/divisions/elderly-activities)

## 25. Transportation

---

### **Hawai'i County Economic Opportunity Council**

47 Rainbow Drive

Hilo, HI 96720

[www.hceoc.net](http://www.hceoc.net)

**808-731-7009**

---

### **Hawai'i County Mass Transit Agency**

Hele-On Kako'o Paratransit – Kona

Hele-On Bus

Shared Ride Taxi

[www.HawaiiCounty.gov/mass-transit](http://www.HawaiiCounty.gov/mass-transit)

**808-961-8744**

**808-967-8744**

**808-961-8744**

---

### **Hawai'i County Parks and Rec. Department – Coordinated Services for the Elderly**

1055 Kino'ole St. Suite 106

Hilo, HI 96720

74-5044 Ane Keohokalole Hwy,

Kailua-Kona, HI 96740

**808-961-8777**

**808-961-8025 TTY**

**808-323-4320**

**808-961-8025 TTY**

---

## 25. Transportation (cont.)

---

### **Hui Malama Ola Na Oihi**

1438 Kilauea Ave

Hilo, HI 96720

[www.hmono.org](http://www.hmono.org)

**808-969-9220**

---

### **Aloha Angel Transport**

[www.alohaangeltransport@gmail.com](mailto:www.alohaangeltransport@gmail.com)

**808-796-3018**

---

## 26. Veteran Services

---

### **State of Hawai'i Office of Veteran's Services**

1304 Kekuanaoa St. Suite L 102 Hilo, HI 96720

73-4976 Kamanu St. Suite 207 Kona, HI 96740

[www.dod.Hawaii.gov/ovs/](http://www.dod.Hawaii.gov/ovs/)

---

**808-369 3538 Hilo**

**808-844-6664 Kona**

### **US Veteran's Affairs Office**

1285 Waianuenu Ave # 211 Hilo, HI 96720

75-377 Hualalai Rd. Kailua Kona, HI 96740

**808-935-3781 Hilo**

**808-329-0774 Kona**

---

### **Kona Veteran's Center**

73-4976 Kamanu St. Suite 207

Kailua-Kona, HI 96740

**808-329-0574**

---

### **Yukio State Veteran's Home**

1180 Waianuenu Ave

Hilo, HI 96720

[www.yukiookutsustateveteranshome.org](http://www.yukiookutsustateveteranshome.org)

**808-961-1500**

## 27. Additional Resources

---

### **Neighborhood Place of Puna – Coordination Center**

**808-501-1413**

16-105 Opukahaia St.

Keaau, HI 96749

[www.neighborhoodplaceofpuna.org](http://www.neighborhoodplaceofpuna.org)

- The Coordination Center helps residents find, navigate, and connect with housing, financial, and health-related resources offered in our community.
- 

### **Hawai'i County Community Paramedicine Program**

**808-338-0225 E. Hawai'i**

**808-937-7964 W. Hawai'i**

- In home fall/fire prevention assessments. Project lifesaver program. Education on when to use EMS services
- 

### **Soderholm Mobility**

**1-808-834-14117**

2044 Dillingham Blvd

Honolulu, HI 96819

[Soderholm.bus.com](http://Soderholm.bus.com)

- Vehicle modifications for disabled drivers
- 

### **Kupuna Mobile Health, LLC – Gina Puen**

**808-359-1641**

[www.kupunamobilehealth.com](http://www.kupunamobilehealth.com)

- Provides mobile, house calls and telemedicine services for Hilo residents



## 28. Additional Resources

---

### **Community First Hawai'i**

[www.communityfirsthawaii.org/registration](http://www.communityfirsthawaii.org/registration)

- Provides step-by-step to complete your Advanced Health Care Directives. Workshops are held via zoom or in person.
- 

**808-987-1230** to Register

---

### **Waikoloa Loan Closet**

68-1845 Waikoloa Rd Suite 221

Waikoloa, HI 96738

- Borrow or donate assisted devices such as walkers, wheelchairs, canes and more.

**808-756-7186**

---

### **Soderholm Mobility**

2044 Dillingham Blvd

Honolulu HI. 96819

[Soderholm.bus.com](http://Soderholm.bus.com)

- Vehicle modifications for disabled drivers

**1-808-834-14117**

---

### **Kupuna Mobile Health, LLC – Gina Puen**

[www.kupunamobilehealth.com](http://www.kupunamobilehealth.com)

- Provides mobile, house calls and telemedicine services for Hilo residents

**808-359-1641**





# THE AGING AND DISABILITY RESOURCE CENTER

*An access point for information, resources, and referrals*

## ADRC RESOURCE LIBRARY

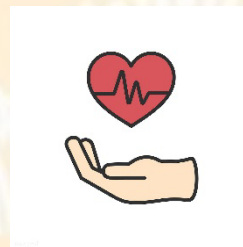
Your one-stop for brochures, literature, and information to safely age-in-place on the Big Island. Find information on local programs, assistance, services, and activities for Kupuna.



## BETTER CHOICES BETTER HEALTH

An evidence-based program designed to help individuals manage their chronic diseases and make choices to support a healthier lifestyle. It's never too late to make a change!

Call The Hawai'i County Office of Aging at 808-961-8600 for information.



## LEGAL AID

The Legal Aid Society of Hawai'i can assist with legal documents and more. Contact our office at 808-961-8626 to request a referral for free legal services from Legal Aid Society of Hawai'i. Client must be at least 60 years old and a resident of Hawai'i Island.



## EMERGENCY PREPAREDNESS PLANNING

Do you feel prepared to face another emergency? The ADRC has a program that can help you plan for the future.

Visit our website at: [www.hcoaHawaii.gov](http://www.hcoaHawaii.gov) to print the Emergency Preparedness Plan workbook and watch a short video that guides you in completing your Emergency Plan. You can also call the ADRC to ask for a workbook.

